

**Lee Co. to John C. Olinger**

**DB 7 pg 322**

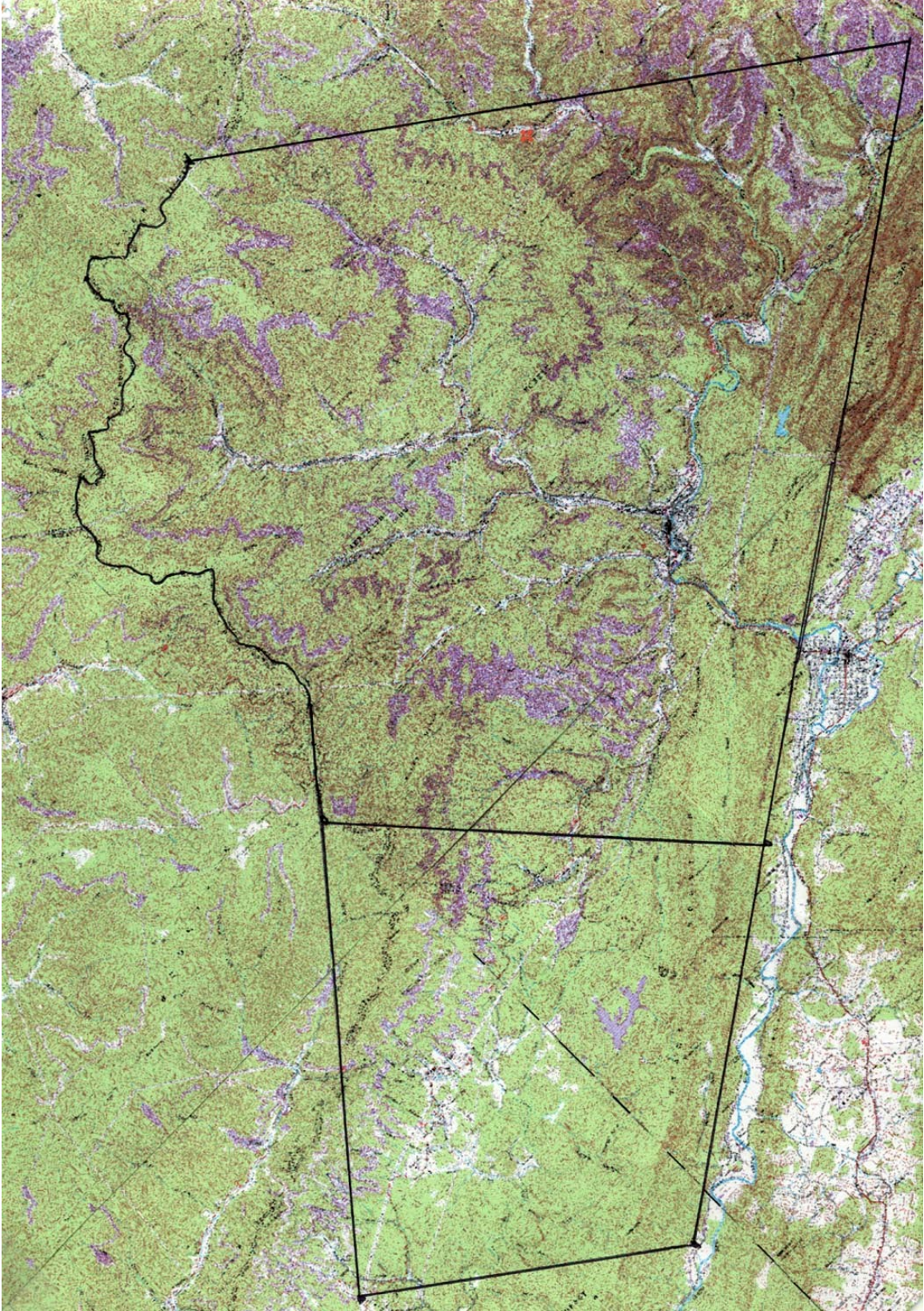
**(the Olinger Tract sold to VCI)**

This Indenture made this 7<sup>th</sup> day of December in the year of Christ 1836 between Alexander W. Mills, Clerk of the County of Lee in the Commonwealth of Virginia, of the one part, and John C. Olinger of the county and Commonwealth of aforesaid of the other part. Whereas a certain tract or parcel of land lying and being in the county of Lee Virginia containing forty nine thousand two hundred acres, has been returned delinquent in the name of the heirs of Nathaniel Taylor for the non payment of the taxes due thereon for the year 1834 which taxes with the leinages thereon chargeable by law, upon the said tract of parcel of land amounts to the sum of four dollars and ninety two cents, and the said tract or parcel of land having been duly advertised according to law, was offered for sale, at public auction for cash at the October court held for Lee county at the courthouse which was on the 21<sup>st</sup> day of October 1834, on so much thereof as would be sufficient to discharge the said arrears of taxes with the leinages as aforesaid when the said John C. Olinger offered the said sum of \$4.92 cash for Forth eight thousand two hundred acres, and no persons offering to pay the same for a like quantity of land than the said 48,000 acres the same was bid off to the said John C. Olinger and the said Olinger having returned to the court a fair plot and certificate of his having the same surveyed and laid off in accordance of an act of the general assembly, which was received by the court, and ordered to be recorded. Which survey is bounded as follows: Beginning at a stake on and near the top of the Stone mountain on the original line of said survey thence N40W1640P to two sugar trees on a line of the original survey thence with the same N40E580P to a chestnut, poplar, and sugar sapling on the top of a ridge, thence N13E60P to a large Spanish Oak on the side of a ridge, thence N44P to a large Spanish Oak and two sugar trees on a ridge N13W210P to a chestnut and a sugar tree on a flat, thence N40W120P to a chestnut oac and sugar tree on a ridge N85W60P to three maples and walnut in a flat amongst rocks N37W20P to a cherry and two chesnuts on a flat N15W88P to two chestnuts maple and hickory on a flat n55W60P to three sugar trees on a rise N18W80P to a black walnut and lynn in rich peavine and N37E58P to a poplar sugar tree black oak on a ridgeN126 poles to a large black oak hickory and buckeye on a rich ridge n28E 38P to four chestnuts and buckeye on a rise N71E36P to two chestnuts Spanish oak and two sugar saplings on a spur N37E32 P to a Sycamore and two sugar saplings in the side of a rich hill N71E 32P to three chesnuts on the side of a ridge S51E 34P to three chestnut oaks on the top of a ridge East 30P to a chestnut and maple and Spanish oak on a spur N44E40P to two chestnuts and a sugar sapling on the top of a ridge N 20E138P to five maples on the point of a ridge E40P to two maples and a sugar tree on a rise S59E 34P to a maple marked S. F. above the head of Fugate Spring East 62 poles to three sugar saplings on a rise S80E46P two black oaks on a ridge N19E 54P to a chestnut and two maples on a ridge N50E50P to a large chestnut and cherry tree on rich level land N67E72P to a maple sugar tree, hickory and Lynn on a flat N25E94P to a large Spanish oak hickory and Chesnut oak on a ridge N45E44P to a sugar tree hickory and buckeye on a ridge N61E38P to a maple and sugar tree on a ridge N3E116P to a chestnut and maple

at the foot of a spur N30W46P to two Lynn in rich soil N3E54P to two large chestnuts on a flat N32E62P to two large Spanish oaks on a rise N73E54P to two chesnuts and large sugar tree on the side of a hill S44E62P to four sugar trees on a ridge N47E70P to two buckeyes a hickory walnut and sugar sapling on a flat N77E74 P to a maple and two chestnuts on a ridge S43E40P to a double chestnut and maple on a ridge East 28P to a large maple lynn and sugar tree on the side of a hill N44E42P to three sugar saplings and a lynn on a stony point N82E126P to pointers on the top of a ridge N65E80P to nine sugar trees on the top of a ridge S 56 E2294P to a stake thence south leaving the original line 628P to a stake in the original line leaving out one thousand acres thence with the original line S57W to the Beginning. Now this Indenture witnesseth that the said Alexander W. Mills clerk as aforesaid for and in consideration of the said sum of \$4.92 cents to the said Sheriff in hand paid, the receipt whereof is hereby acknowledged, doth bargain and sell unto the said John Olinger and his heirs the said tract or parcel of land with the appurtenances forementioned the said Alexander W. Mills clerk as aforesaid by virtue of the authority invested in him by law doth hereby convey assign and transfer to the said John C. Olinger and his heirs all the estate, rights, title interest, and claim to the said tract or parcel of land aforesaid with the appurtenances, which he is authorized to convey under the provisions of an act entitled "An act concerning delinquent and forfeited lands and providing for the sale of lands returned delinquent hereafter for the non payment of taxes" passed March 10<sup>th</sup> 1832" In witness whereof the said Alexander W. Milles clerk as afore said, hath hereto subscribed his name and affixed his seal the day and year first above written Virginia.

Alexander W. Mills      SEAL

BELOW IS A TOPOGRAPHIC MAP  
OF THE OLINGER SURVEY  
INSERTED VERTICALLY  
AT 90 DEGREES TO NORTH / SOUTH



END